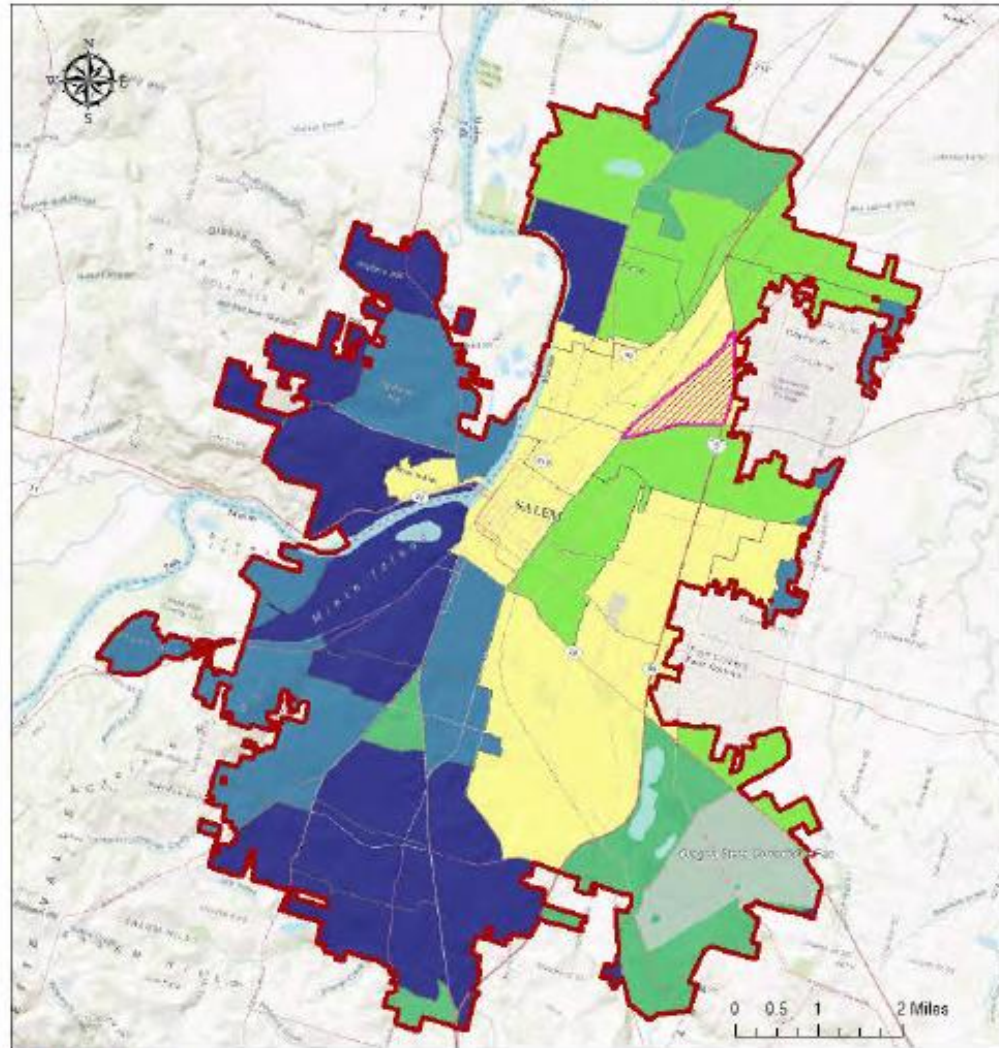


Shaping the Future: Policies that Make a Difference



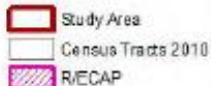
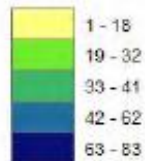
Low Poverty Index
 Salem-Keizer
 HUD AFFH Assessment Tool 2/28/2018, 2019 TIGER/Line, 2019 Ersi



LEGEND

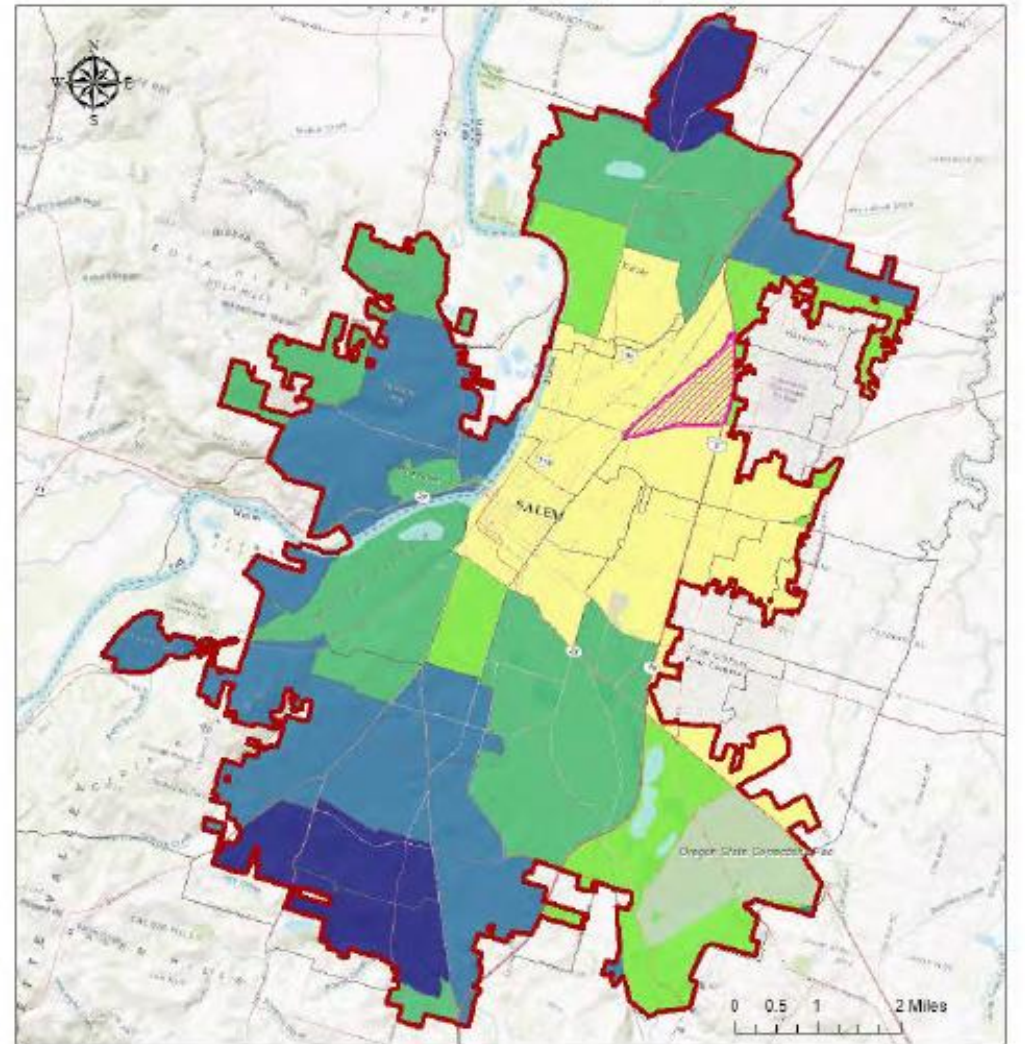
Low Poverty Index

A higher Low Poverty Index indicates less exposure to poverty.



Data Sources: HUD AFFH Assessment Tool 11/20/17, 2019 TIGER/Line, Ersi

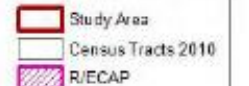
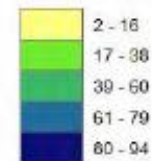
School Proficiency Index
 Salem-Keizer
 HUD AFFH Assessment Tool 2/28/2018, 2019 TIGER/Line, 2019 Ersi



LEGEND

School Proficiency Index

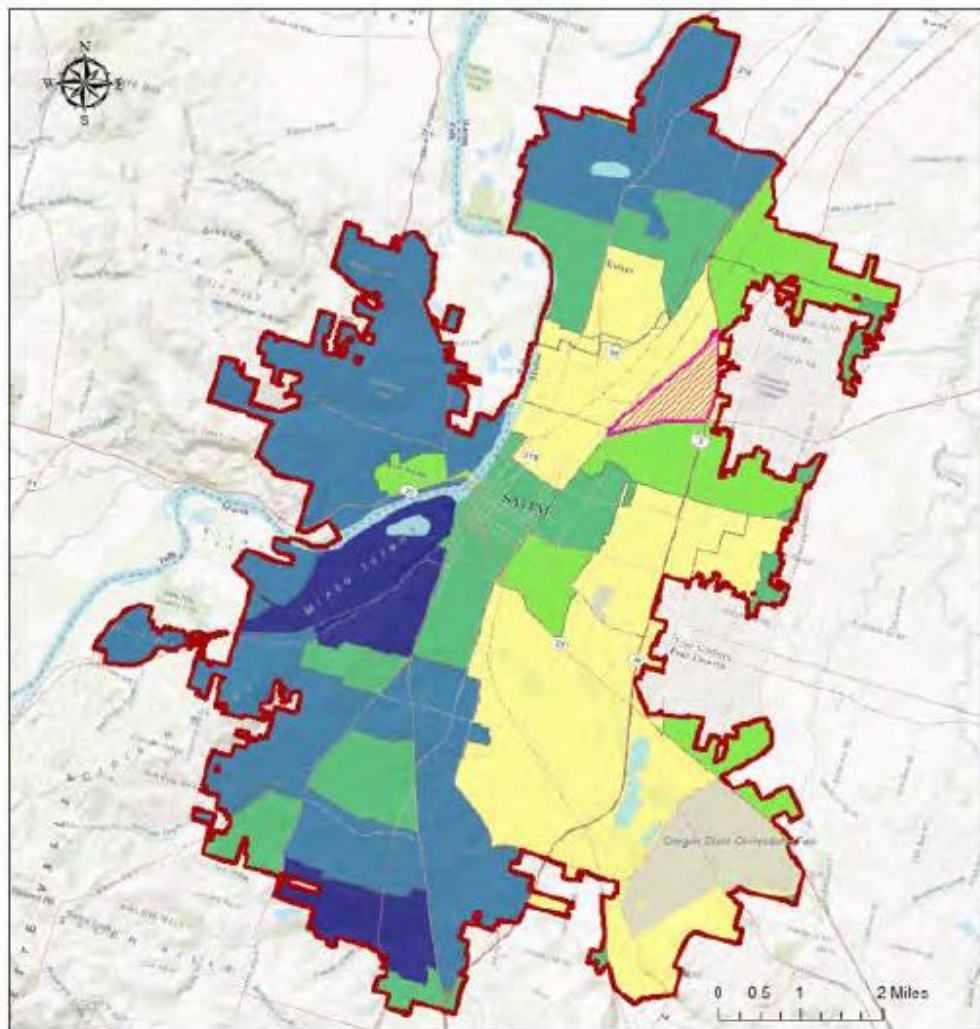
A higher School Proficiency Index indicates a higher quality school system.



Note: The School Proficiency Index has been calculated using the median of each tract's block groups.

Data Sources: HUD AFFH Assessment Tool 11/20/17, 2019 TIGER/Line, Ersi

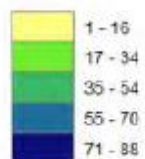
Labor Market Engagement Index
 Salem-Keizer
 HUD AFFH Assessment Tool 2/28/2018, 2019 TIGER/Line, 2019 ERSI



LEGEND

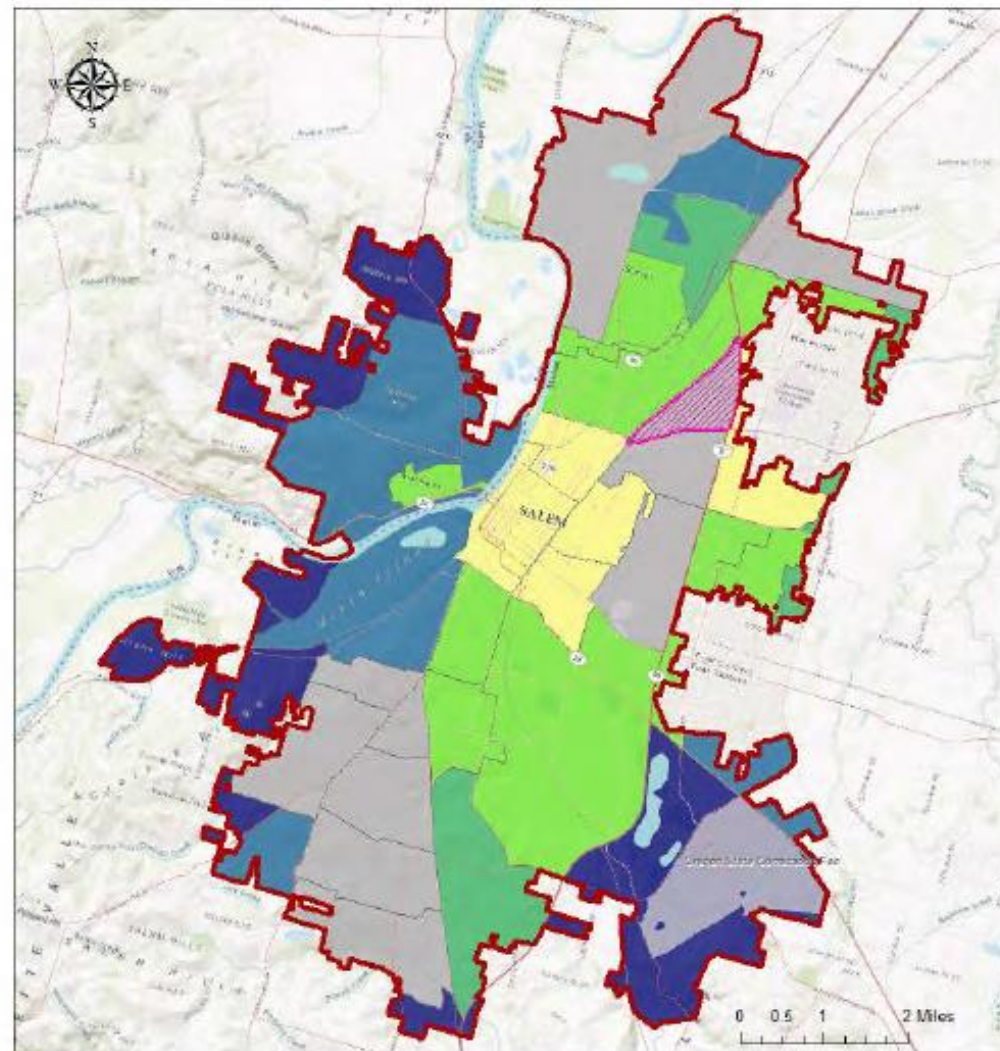
Labor Market Engagement Index

A higher Labor Market Engagement Index indicates greater labor market engagement



Data Sources: HUD AFFH Assessment Tool 11/20/17, 2019 TIGER/Line, ERSI

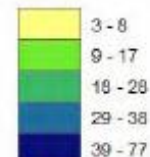
Environmental Hazard Index
 Salem-Keizer
 HUD AFFH Assessment Tool 2/28/2018, 2019 TIGER/Line, 2019 ERSI



LEGEND

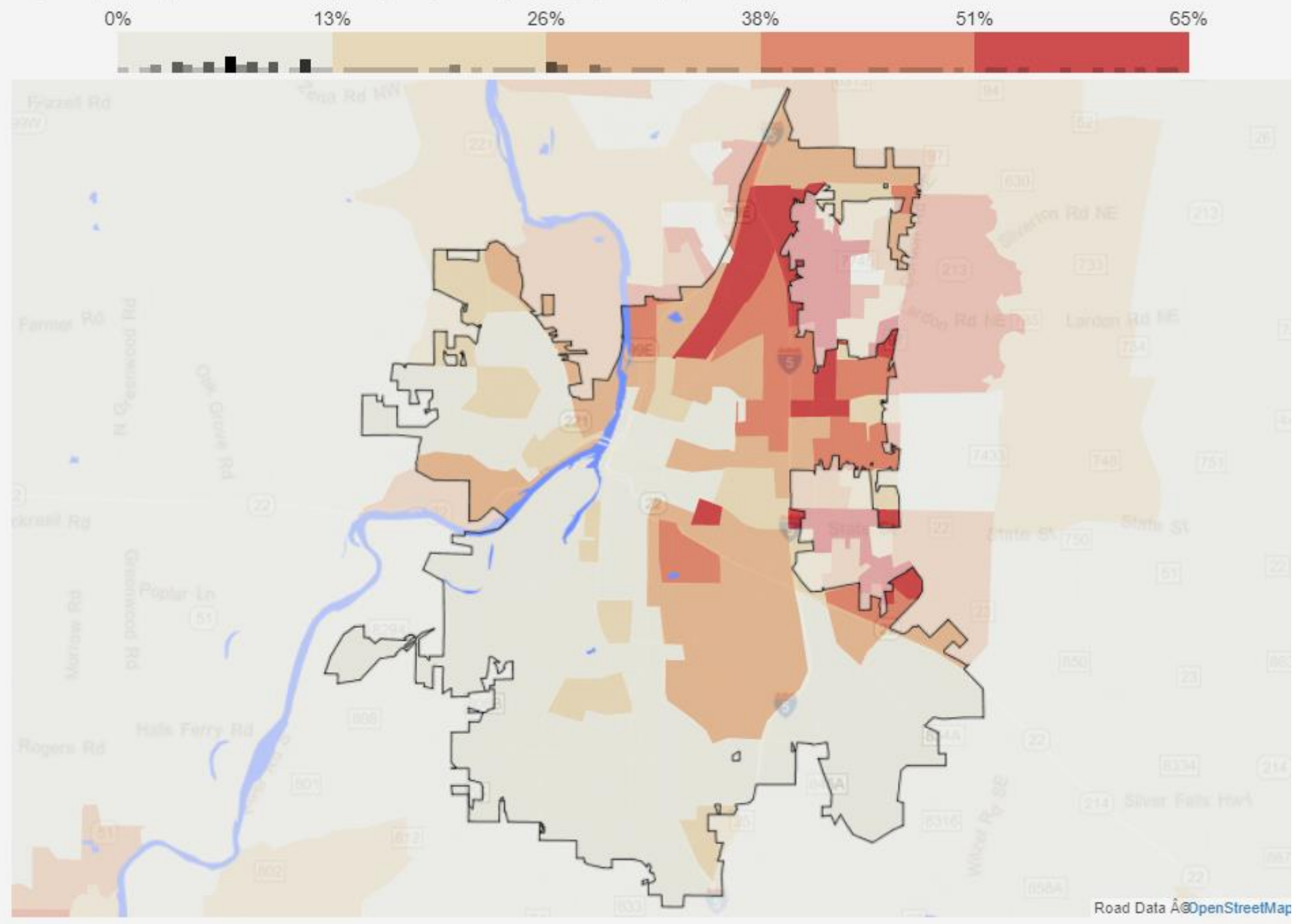
Environmental Health Index

A higher Environmental Health Index indicates less exposure to toxins harmful to human health.



Data Sources: HUD AFFH Assessment Tool 11/20/17, 2019 TIGER/Line, ERSI

Hispanics (excluding black and Asian Hispanics) as a percentage of the population (%):



SHAPING THE FUTURE

Mid-Willamette Valley
Affordable Housing Conference

mwwhomelessalliance.org